

RESEARCH ARTICLE

Open Access

Humoral and cellular immune responses after influenza vaccination in patients with chronic fatigue syndrome

Hetty Prinsen^{1*}, I Jolanda M de Vries^{1,2}, Ruurd Torensma², Jeanette M Pots², Sasja F Mulder¹, Carla M L van Herpen¹, Lammy D Elving³, Gijs Bleijenberg⁴, Foekje F Stelma⁵ and Hanneke W M van Laarhoven^{1,6}

Abstract

Background: Chronic fatigue syndrome (CFS) is a clinical condition characterized by severe and disabling fatigue that is medically unexplained and lasts longer than 6 months. Although it is possible to effectively treat CFS, the nature of the underlying physiology remains unclear. Various studies have sought evidence for an underlying disturbance in immunity. The aim of this study was to compare the humoral and cellular immune responses upon influenza vaccination in CFS patients and healthy controls.

Results: Identical antibody titers were observed in CFS patients and healthy controls. Patients and controls demonstrated similar seroprotection rates against all three virus-strains of the influenza vaccine, both pre- and post-vaccination. Functional T cell reactivity was observed in both CFS patients and healthy controls. CFS patients showed a non-significant, numerically lower cellular proliferation at baseline compared to controls. Vaccination induced a significant increase in cellular proliferation in CFS patients, but not in healthy controls. Cytokine production and the number of regulatory T cells were comparable in patients and controls.

Conclusions: The humoral and cellular immune responses upon influenza vaccination were comparable in CFS patients and healthy controls. Putative aberrations in immune responses in CFS patients were not evident for immunity towards influenza. Standard seasonal influenza vaccination is thus justified and, when indicated, should be recommended for patients suffering from CFS.

Keywords: Chronic fatigue syndrome, Influenza, Vaccination, Humoral immunity, Cellular immunity

Background

Chronic fatigue syndrome (CFS) is a clinical condition characterized by severe and disabling fatigue that is medically unexplained and lasts longer than 6 months [1]. The estimated worldwide prevalence of CFS is 0.4-1% [2]. The existing evidence suggests that cognitive behavior therapy, specifically designed for CFS, is an effective treatment option [3-10]. However, although it is possible to effectively treat CFS, the nature of the underlying pathophysiology remains unclear.

Hypotheses explaining the pathophysiological mechanism of CFS include morphological and metabolic

alterations in the brain, [11-17] diminished central activation of muscles, [18] altered central nervous system functioning, [2] a neuroendocrine disturbance, [2] or cognitive impairment [2]. Furthermore, the presence of an underlying immunological problem has been suggested as an explanation for CFS [2]. Cytokine dysregulation, decreased natural killer cell functioning, the presence of autoantibodies, and a reduced response of T cells to mitogens and other specific antigens have been reported in CFS [2,19,20]. If immunity is disturbed in CFS patients, they might have an altered response to vaccination. Vaccines, accompanying adjuvants, and silicone breast implants could act in concert in the development of CFS [2,19-21]. Therefore, the aim of this study was to compare the humoral and cellular immune responses upon vaccination, using seasonal influenza vaccination as

* Correspondence: h.prinsen@onco.umcn.nl

¹Department of Medical Oncology, Radboud University Nijmegen Medical Centre, Geert Grooteplein Zuid 8, 6525, GA Nijmegen, the Netherlands
Full list of author information is available at the end of the article

a model of a vaccination, in CFS patients and healthy controls.

Results

Baseline characteristics

Baseline characteristics of the participants are presented in Table 1.

Humoral immune response

Vaccination induced a significant increase in hemagglutination-inhibition (HI) antibody titers for influenza strain H3N2 and H1N1 in the CFS group as well as in the healthy control group (Figure 1A and 1B). For influenza strain B, vaccination induced no significant increase in HI antibody titers, neither in the CFS, nor in the healthy control group (Figure 1A and 1B). No significant differences in HI antibody titers between both groups were observed prior to vaccination or at day 22. Compared to the healthy controls, CFS patients demonstrated similar seroprotection rates (both pre- and post-vaccination) and seroresponse rates against all three virus-strains (Table 2).

Cellular immune response

Prior to vaccination, T cells proliferated upon phytohemagglutinin (PHA) and virus stimulation in both CFS patients and healthy controls (respectively $14,883 \pm 4,265$ counts and $22,997 \pm 3,902$ counts), indicating that these T cells are functional (Figure 1C and 1D). Cellular proliferation showed no significant differences between CFS patients and healthy controls at baseline (Table 2). Of note, in absolute counts, CFS patients showed at baseline a lower T cell proliferation upon

stimulation in comparison with controls. Interleukin-10 (IL-10) production and the number of regulatory T lymphocytes (Treg) were not significantly different between CFS patients and healthy controls at baseline (Table 2).

Vaccination induced a significant increase in cellular proliferation in CFS patients after stimulation with influenza strain H3N2 and B, and a trend in the same direction for strain H1N1, whereas in healthy controls vaccination induced no significant change in cellular proliferation after stimulation with any of the three virus-strains (Figure 1C and 1D and Table 2).

Post-vaccination, T cell proliferation showed no significant differences between CFS patients and controls, neither for the three different virus strains (Figure 1C and 1D), nor for PHA (respectively $34,964 \pm 4433$ counts and $15,406 \pm 2719$ counts). Of note, in absolute counts, CFS patients showed post-vaccination more proliferating T cells upon stimulation with all three virus-strains, compared to controls. Interferon gamma (IFN- γ), interleukin-4 (IL-4), and interleukin-5 (IL-5) production post-vaccination were not significantly different between CFS patients and healthy controls (Table 2).

Discussion

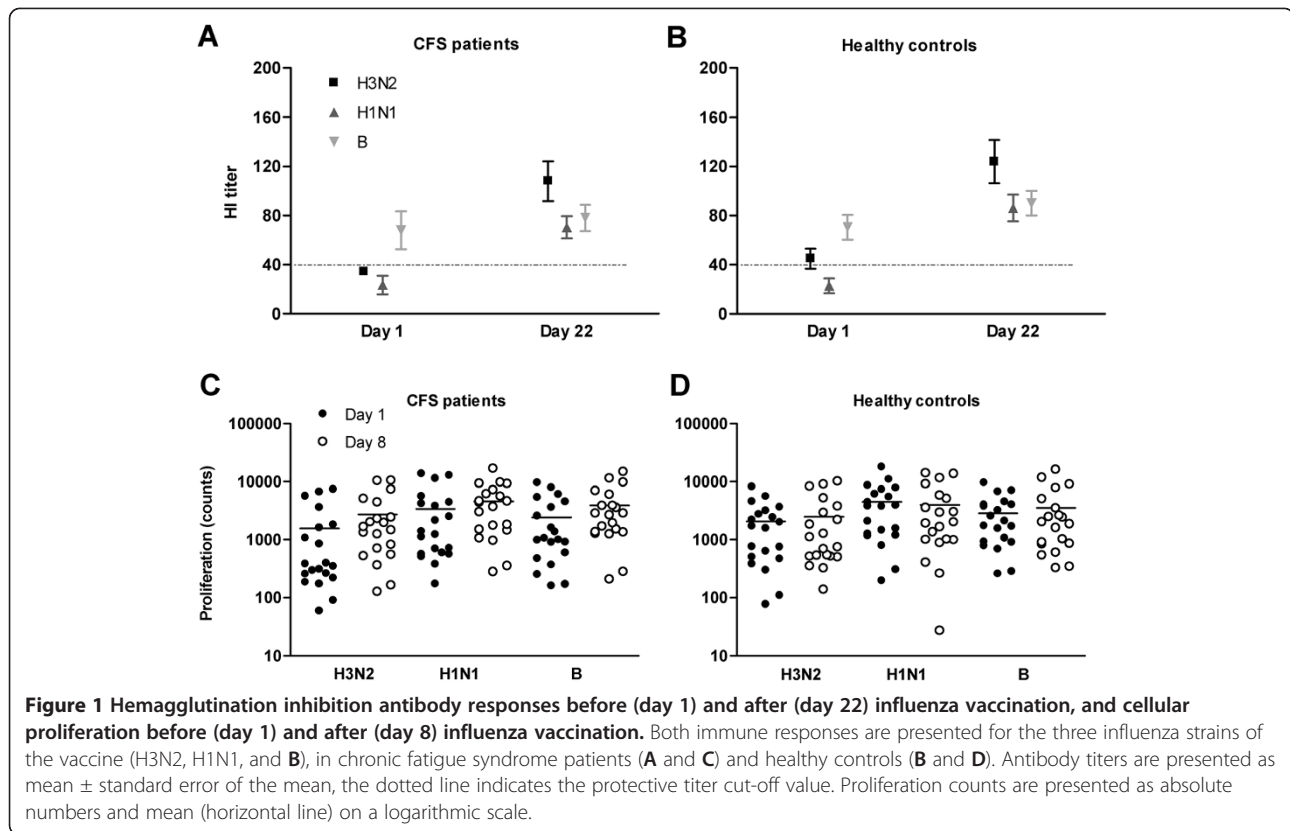
To the best of our knowledge, we are the first to explore both the humoral and cellular immune responses after influenza vaccination in CFS patients. The hypothesized immunological aberrancy claimed to be operative in CFS could not be confirmed by our data.

Both CFS patients and healthy controls showed a significant increase in humoral immune responses from pre- to post-vaccination for virus-strains H3N2 and

Table 1 Baseline characteristics

	Chronic fatigue syndrome patients (n=20)	Healthy controls (n=20)	p-value
Gender			
Male	7 (35)	7 (35)	1.000
Female	13 (65)	13 (65)	
Age (years)			
Mean	35.0 \pm 10.0	34.4 \pm 9.2	0.857
CIS-fatigue	48.15 \pm 5.48	15.80 \pm 3.62	<0.001
Hemoglobin (mmol/l)	8.6 \pm 0.6	8.4 \pm 0.7	0.235
Mean absolute leukocyte count (*10⁹/l)	7.2 \pm 1.9	6.9 \pm 1.9	0.654
Mean neutrophil count (% of total)	60.2 \pm 8.7	59.9 \pm 8.7	0.928
Mean lymphocyte count (% of total)	29.8 \pm 7.6	29.2 \pm 7.1	0.797
Mean monocyte count (% of total)	5.7 \pm 1.5	5.2 \pm 1.4	0.332
Influenza vaccination prior to 2010			
Yes	5 (25)	5 (25)	1.000
No	15 (75)	15 (75)	

Data are presented as mean \pm standard deviation or as absolute numbers with percentages in brackets.



H1N1. Virus-strain B did not show such an increase from day 1 to day 22, but for this virus-strain the HI titer was already high prior to vaccination.

In a previous study, only the effect of influenza vaccination on the antibody response of CFS patients was determined in 40 CFS patients and 21 matched healthy volunteers [22]. In accordance with our study, influenza vaccination provided protective antibody levels. Our study gives additional information on cellular immune responses in CFS patients.

We observed that, although not statistically significant, the incorporation of tritium thymidine by proliferating T cells at baseline was numerically lower in patients suffering from CFS in comparison to healthy controls. To investigate whether it is worthwhile to investigate this trend in more detail, we studied immunological mechanisms commonly known to suppress immunity. First, the immunosuppressive cytokine IL-10, which is able to inhibit T cell proliferation, was assessed [23]. However, production at baseline of IL-10 was similar in patients and controls. Secondly, Treg are known to negatively modulate T cell responses [24]. Nevertheless, the percentage of Treg in CFS patients at baseline did not differ from the controls. Another possible explanation for the decreased number of proliferating T lymphocytes in CFS patients is elevated numbers of co-inhibitory

molecules, like programmed death-1, [25,26] cytotoxic T lymphocyte antigen-4, [25] or B and T lymphocyte attenuator [27]. Whether inhibitory mechanisms play a role in CFS patients need to be explored in more detail.

From pre- to post-vaccination, CFS patients showed a significant increase in cellular proliferation in two out of three virus-strains and a trend in the same direction for the third virus-strain, whereas healthy controls did not show a significant change in proliferation from day 1 to day 8. In absolute counts, CFS patients showed post-vaccination more proliferating T cells for all three virus-strains, compared to controls. This non-significant elevation in cellular immune responses could not be explained by an increase in the levels of cytokines IFN- γ , IL-4, and IL-5, cytokines involved in the type 1 and type 2 helper T cell responses, suggesting a type 0 helper T cell response in CFS patients after vaccination.

Limitations of the study

Given the exploratory nature of this study, group sizes were relatively small and not based on power calculations. Consequently, subtle differences between CFS patients and healthy controls may have gone unnoticed. However, the sample size of our study was sufficiently high to show that CFS patients are able to mount a

Table 2 Humoral and cellular immune responses

	Chronic fatigue syndrome patients (n=20)	Healthy controls (n=20)	p-value
Seroprotection rate pre-vaccination (day 1)			
H3N2	13 (65)	12 (60)	0.744
H1N1	4 (20)	5 (25)	0.705
B	16 (80)	17 (85)	0.677
H3N2, H1N1, and B	2 (10)	4 (20)	0.376
Seroprotection rate post-vaccination (day 22)			
H3N2	18 (90)	20 (100)	0.147
H1N1	18 (90)	18 (90)	1.000
B	18 (90)	20 (100)	0.147
H3N2, H1N1, and B	15 (75)	18 (90)	0.212
Seroresponse rate post-vaccination (day 1 to 22)			
H3N2	10 (50)	12 (60)	0.525
H1N1	13 (65)	12 (60)	0.744
B	2 (10)	3 (15)	0.633
H3N2, H1N1, and B	1 (5)	2 (10)	0.548
IL-10 production at baseline (day 1, pg/ml)			
H3N2	4.5±10.9	2.5±5.0	0.457
H1N1	65.6±127.4	35.3±47.2	0.329
B	19.3±56.0	10.5±20.2	0.514
Treg at baseline (day 1, %)			
Unstimulated	2.8±1.2	2.7±1.5	0.733
IFN-γ production post-vaccination (day 8, pg/ml)			
H3N2	162.1±220.5	116.0±180.8	0.474
H1N1	578.3±828.8	382.5±446.1	0.360
B	316.4±520.7	418.1±528.9	0.544
IL-4 production post-vaccination (day 8, pg/ml)			
H3N2	0.0±0.0	4.3±13.5	0.169
H1N1	0.0±0.0	7.7±20.2	0.105
B	2.9±8.8	0.0±0.0	0.163
IL-5 production post-vaccination (day 8, pg/ml)			
H3N2	1.4±4.3	1.7±4.7	0.811
H1N1	1.2±3.4	1.5±4.5	0.788
B	0.8±3.4	3.4±6.4	0.114

Data are presented as absolute numbers with percentages in brackets or as mean ± standard error of the mean.

significant protective antibody response and a sufficient cellular immune response upon a single shot of influenza vaccine.

Conclusions

In conclusion, putative aberrations in immune responses in CFS patients were not evident for immunity towards influenza. We show that CFS patients are able to mount a protective antibody response and a sufficient cellular immune response upon a single shot of influenza vaccine, which is comparable with healthy controls. Therefore, standard seasonal influenza vaccination is thus

justified and, when indicated, should be recommended for patients suffering from CFS.

Methods

Participants

The study population consisted of a group of CFS patients (n=20) and a group of healthy controls (n=20). CFS patients fulfilled the Centre for Disease Control and prevention criteria for CFS [1] and were referred for cognitive behavior therapy to the Expert Centre for Chronic Fatigue of the Radboud University Nijmegen Medical Centre (RUN-MC, Nijmegen, the Netherlands). CFS patients were asked to bring a gender- and age-matched non-fatigued friend as a control. Fatigue severity was measured by the fatigue severity subscale of the Checklist Individual Strength (CIS-fatigue) [28,29]. A cutoff score of ≥35 points on this subscale indicates severe fatigue and a score of <27 points signifies normal fatigue feelings. All participants were between 18 and 60 years old. The local ethics committee of the RUN-MC approved the study and all participants provided written informed consent.

Vaccination and blood collection

Between September 2010 and January 2011, all participants were intramuscularly vaccinated with a single dose of the inactivated trivalent split influenza vaccine (Vaxigrip^R, Sanofi Pasteur MSD, Hoofddorp, the Netherlands), which contained inactivated, split virion of the three influenza strains (A/H3N2/Perth/16/2009, A/H1N1/California/7/2009, and B/Brisbane/60/2008).

Peripheral blood mononuclear cells (PBMC) were collected at baseline (day 1) and 7 days after vaccination (day 8), and serum was collected at baseline and 21 days after vaccination (day 22) [30].

Humoral immune response

The humoral immune responses on influenza vaccination were measured in serum by the HI antibody test as described previously [31]. The virus antibody responses were measured at day 1 and day 22 for the three different influenza strains of the vaccine (A/H3N2/Perth/16/2009, A/H1N1/California/01/2010, and B/Florida/004/2006). Seroprotection was defined as an antibody titer of at least 1:40 [31,32]. Post-vaccination seroresponse was defined as at least a four-fold increase in titers [32].

Cellular immune response

The cellular immune responses were measured by T lymphocyte proliferation and cytokine secretion of PBMC collected at day 1 and 8, and the presence of Treg at day 1.

For analysis of lymphocyte proliferation and cytokine secretion, 1.5×10^5 PBMC were added per well of a 96-wells plate in culture medium (RPMI 1640 supplemented with 4% human serum albumin). In the proliferation assay, PBMC were incubated with $1 \mu\text{g/ml}$ PHA and with a 1:10 dilution of the separate virus-strains (A/H3N2/Perth/25/11/2008, A/H1N1/California/01/2010, and B/Florida/05/11/2008). After 48 hours of culture, supernatant was harvested to analyze cytokine production. The Th1/Th2 11plex kit (eBioscience, San Diego, CA) was used according to the manufacturer's protocol in order to measure IL-10 at day 1 and IFN- γ , IL-4, and IL-5 at day 8. After four days of culture, $1 \mu\text{Ci}$ ^3H -thymidine (MP Biomedicals, Santa Ana, California, USA) was added to each well for overnight incubation to measure T lymphocyte proliferation.

Multi-color flow cytometric analysis was performed on unstimulated PBMC collected at day 1 according to the manufacturer's protocol. Cells were stained for anti-CD4/FITC (Beckman Coulter), anti-CD25/PE-Cy7 (BD Biosciences, Breda, the Netherlands), anti-CD127/PE (BD Bioscience), and anti-FOXP3/APC (clone PCH101, eBioscience). Treg were defined as CD4+CD25++CD127-FOXP3+ and were expressed as a percentage of CD4+CD25++CD127- cells.

Statistics

Statistical analyses were performed using PASW for Windows[®], version 18.0.2 (Armonk, New York, USA). Independent samples *t* tests were performed to assess differences in numerical variables at day 1, 8, and 22. Paired *t* tests were used to assess changes in numerical variables from pre- to post-vaccination. Chi-square tests were performed to compare groups on categorical variables. Differences were considered statistically significant at $p < 0.05$.

Abbreviations

CFS: Chronic fatigue syndrome; HI: Hemagglutination-inhibition; IFN- γ : Interferon gamma; IL-4: Interleukin-4; IL-5: Interleukin-5; IL-10: Interleukin-10; PBMC: Peripheral blood mononuclear cells; PHA: Phytohemagglutinin; RUN-MC: Radboud University Nijmegen Medical Centre; Treg: Regulatory T lymphocytes.

Competing interests

The corresponding author and the co-authors have no conflicts of interest to declare.

Authors' contributions

HP is primary investigator and is responsible for patient recruitment, data collection, data analysis, and drafting the manuscript. HvL and JdV obtained funding for the study. HvL, JdV, RT, JP, SM, CvH, and HP designed the study. GB and LE assisted in patient recruitment. FS was responsible for the hemagglutination-inhibition antibody test. JP assisted in data collection and data analysis. HvL, JdV, RT, GB, LE, and FS supervised the study. All authors read and approved the final manuscript.

Acknowledgements

This work was supported by Pharmachild and the Paul Speth Fund, but they were not involved in the study design, in the collection, analysis and

interpretation of data; in the writing of the manuscript; and in the decision to submit the manuscript for publication.

We thank all patients who participated in this study; all physicians for referring patients; colleagues from the outpatient clinic of Medical Oncology for influenza vaccination and blood collection; colleagues from the Tumor Immunology Department for assistance with PBMC isolation, experiment performance, and helpful advice.

Author details

¹Department of Medical Oncology, Radboud University Nijmegen Medical Centre, Geert Grooteplein Zuid 8, 6525, GA Nijmegen, the Netherlands.

²Department of Tumor Immunology, Radboud University Nijmegen Medical Centre, Nijmegen, the Netherlands. ³Department of General Internal Medicine, Radboud University Nijmegen Medical Centre, Nijmegen, the Netherlands. ⁴Expert Centre for Chronic Fatigue, Radboud University Nijmegen Medical Centre, Nijmegen, the Netherlands. ⁵Department of Medical Microbiology, Radboud University Nijmegen Medical Centre, Nijmegen, the Netherlands. ⁶Department of Medical Oncology, Academic Medical Center University of Amsterdam, Amsterdam, the Netherlands.

Received: 25 July 2012 Accepted: 11 December 2012

Published: 17 December 2012

References

1. Fukuda K, Straus SE, Hickie I, Sharpe MC, Dobbins JG, Komaroff A, International Chronic Fatigue Syndrome Study Group: **The chronic fatigue syndrome: a comprehensive approach to its definition and study.** *Ann Intern Med* 1994, **121**(12):953–959.
2. Lorusso L, Mikhaylova SV, Capelli E, Ferrari D, Ngonga GK, Ricevuti G: **Immunological aspects of chronic fatigue syndrome.** *Autoimmun Rev* 2009, **8**(4):287–291.
3. Castell BD, Kazantzis N, Moss-Morris RE: **Cognitive behavioral therapy and graded exercise for chronic fatigue syndrome: a meta-analysis.** *Clin Psychol: Sci Pract* 2011, **18**(4):311–324.
4. Chambers D, Bagnall AM, Hempel S, Forbes C: **Interventions for the treatment, management and rehabilitation of patients with chronic fatigue syndrome/myalgic encephalomyelitis: an updated systematic review.** *J R Soc Med* 2006, **99**(10):506–520.
5. Malouff JM, Thorsteinsson EB, Rooke SE, Bhullar N, Schutte NS: **Efficacy of cognitive behavioral therapy for chronic fatigue syndrome: a meta-analysis.** *Clin Psychol Rev* 2008, **28**(5):736–745.
6. Nijhof SL, Bleijenberg G, Uiterwaal CS, Kimpfen JL, van de Putte EM: **Effectiveness of internet-based cognitive behavioural treatment for adolescents with chronic fatigue syndrome (FITNET): a randomised controlled trial.** *Lancet* 2012, **379**(9824):1412–1418.
7. Price JR, Mitchell E, Tidy E, Hunot V: **Cognitive behaviour therapy for chronic fatigue syndrome in adults.** *Cochrane Database Syst Rev* 2008, (3):CD001027.
8. Prins JB, Bleijenberg G, Bazelmans E, Elving LD, de Boo TM, Severens JL, van der Wilt GJ, Spinhoven P, van der Meer JW: **Cognitive behaviour therapy for chronic fatigue syndrome: a multicentre randomised controlled trial.** *Lancet* 2001, **357**(9259):841–847.
9. Stulemeijer M, de Jong LW, Fiselier TJ, Hoogveld SW, Bleijenberg G: **Cognitive behaviour therapy for adolescents with chronic fatigue syndrome: randomised controlled trial.** *BMJ* 2005, **330**(7481):14.
10. Whiting P, Bagnall AM, Sowden AJ, Cornell JE, Mulrow CD, Ramirez G: **Interventions for the treatment and management of chronic fatigue syndrome: a systematic review.** *JAMA* 2001, **286**(11):1360–1368.
11. Brooks JC, Roberts N, Whitehouse G, Majeed T: **Proton magnetic resonance spectroscopy and morphometry of the hippocampus in chronic fatigue syndrome.** *Br J Radiol* 2000, **73**(875):1206–1208.
12. Chaudhuri A, Condon BR, Gow JW, Brennan D, Hadley DM: **Proton magnetic resonance spectroscopy of basal ganglia in chronic fatigue syndrome.** *Neuroreport* 2003, **14**(2):225–228.
13. de Lange FP, Kalkman JS, Bleijenberg G, Hagoort P, van der Meer JW, Toni I: **Gray matter volume reduction in the chronic fatigue syndrome.** *Neuroimage* 2005, **26**(3):777–781.
14. de Lange FP, Koers A, Kalkman JS, Bleijenberg G, Hagoort P, van der Meer JW, Toni I: **Increase in prefrontal cortical volume following cognitive**

- behavioural therapy in patients with chronic fatigue syndrome. *Brain* 2008, **131**(Pt 8):2172–2180.
15. Mathew SJ, Mao X, Keegan KA, Levine SM, Smith EL, Heier LA, Otcheretko V, Coplan JD, Shungu DC: **Ventricular cerebrospinal fluid lactate is increased in chronic fatigue syndrome compared with generalized anxiety disorder: an in vivo 3.0 T (1)H MRS imaging study.** *NMR Biomed* 2009, **22**(3):251–258.
 16. Puri BK, Counsell SJ, Zaman R, Main J, Collins AG, Hajnal JV, Davey NJ: **Relative increase in choline in the occipital cortex in chronic fatigue syndrome.** *Acta Psychiatr Scand* 2002, **106**(3):224–226.
 17. Tomoda A, Miike T, Yamada E, Honda H, Moroi T, Ogawa M, Ohtani Y, Morishita S: **Chronic fatigue syndrome in childhood.** *Brain Dev* 2000, **22**(1):60–64.
 18. Schillings ML, Kalkman JS, van der Werf SP, van Engelen BG, Bleijenberg G, Zwarts MJ: **Diminished central activation during maximal voluntary contraction in chronic fatigue syndrome.** *Clin Neurophysiol* 2004, **115**(11):2518–2524.
 19. Ortega-Hernandez OD, Shoenfeld Y: **Infection, vaccination, and autoantibodies in chronic fatigue syndrome, cause or coincidence?** *Ann N Y Acad Sci* 2009, **1173**:600–609.
 20. Nancy AL, Shoenfeld Y: **Chronic fatigue syndrome with autoantibodies—the result of an augmented adjuvant effect of hepatitis-B vaccine and silicone implant.** *Autoimmun Rev* 2008, **8**(1):52–55.
 21. Rosenblum H, Shoenfeld Y, Amital H: **The common immunogenic etiology of chronic fatigue syndrome: from infections to vaccines via adjuvants to the ASIA syndrome.** *Infect Dis Clin North Am* 2011, **25**(4):851–863.
 22. Sleight KM, Danforth DG, Hall RT, Fleming JA, Stiver HG: **Double-blind, randomized study of the effects of influenza vaccination on the specific antibody response and clinical course of patients with chronic fatigue syndrome.** *Can J Infect Dis* 2000, **11**(5):267–273.
 23. Taga K, Tosato G: **IL-10 inhibits human T cell proliferation and IL-2 production.** *J Immunol* 1992, **148**(4):1143–1148.
 24. Levings MK, Sangregorio R, Roncarolo MG: **Human cd25(+)-cd4(+) t regulatory cells suppress naive and memory T cell proliferation and can be expanded in vitro without loss of function.** *J Exp Med* 2001, **193**(11):1295–1302.
 25. Coyle AJ, Gutierrez-Ramos JC: **The expanding B7 superfamily: increasing complexity in costimulatory signals regulating T cell function.** *Nat Immunol* 2001, **2**(3):203–209.
 26. Keir ME, Butte MJ, Freeman GJ, Sharpe AH: **PD-1 and its ligands in tolerance and immunity.** *Annu Rev Immunol* 2008, **26**:677–704.
 27. Watanabe N, Gavrieli M, Sedy JR, Yang J, Fallarino F, Loftin SK, Hurchla MA, Zimmerman N, Sim J, Zang X, *et al*: **BTLA is a lymphocyte inhibitory receptor with similarities to CTLA-4 and PD-1.** *Nat Immunol* 2003, **4**(7):670–679.
 28. Dittner AJ, Wessely SC, Brown RG: **The assessment of fatigue: a practical guide for clinicians and researchers.** *J Psychosom Res* 2004, **56**(2):157–170.
 29. Vercoulen JH, Swanink CM, Fennis JF, Galama JM, van der Meer JW, Bleijenberg G: **Dimensional assessment of chronic fatigue syndrome.** *J Psychosom Res* 1994, **38**(5):383–392.
 30. Mulder SF, Jacobs JF, Olde Nordkamp MA, Galama JM, Desar IM, Torensma R, Teerenstra S, Mulders PF, Vissers KC, Punt CJ, *et al*: **Cancer patients treated with sunitinib or sorafenib have sufficient antibody and cellular immune responses to warrant influenza vaccination.** *Clin Cancer Res* 2011, **17**(13):4541–4549.
 31. de Jong JC, Palache AM, Beyer WE, Rimmelzwaan GF, Boon AC, Osterhaus AD: **Haemagglutination-inhibiting antibody to influenza virus.** *Dev Biol (Basel)* 2003, **115**:63–73.
 32. Pollyea DA, Brown JM, Horning SJ: **Utility of influenza vaccination for oncology patients.** *J Clin Oncol* 2010, **28**(14):2481–2490.

doi:10.1186/1471-2172-13-71

Cite this article as: Prinsen *et al.*: Humoral and cellular immune responses after influenza vaccination in patients with chronic fatigue syndrome. *BMC Immunology* 2012 **13**:71.

Submit your next manuscript to BioMed Central and take full advantage of:

- Convenient online submission
- Thorough peer review
- No space constraints or color figure charges
- Immediate publication on acceptance
- Inclusion in PubMed, CAS, Scopus and Google Scholar
- Research which is freely available for redistribution

Submit your manuscript at
www.biomedcentral.com/submit

