


RESEARCH ARTICLE

Open Access



Elevated expansion of follicular helper T cells in peripheral blood from children with acute measles infection

Weiyun Shen¹, Hongzhou Ye², Xilin Zhang¹, Lixia Huo¹, Jingli Shen¹, Li Zhu², Xiang Wang¹ and Dawei Cui^{3*} 

Abstract

Background: Measles outbreaks have threatened the global elimination and eradication of measles in recent years. Measles virus (MeV)-specific antibodies are successful in clearing MeV infection. Follicular helper T (Tfh) cells play a crucial role in promoting antibody production. This study investigated the potential role of Tfh cells in peripheral blood mononuclear cells (PBMCs) from children with acute MeV infection.

Results: The frequencies of CXCR5⁺CD4⁺ Tfh, ICOS^{high} Tfh, and PD-1^{high} Tfh cells in PBMCs and levels of IL-6 and IL-21 in plasma were significantly elevated in patients with acute MeV infection. Moreover, a positive correlation was discovered among the frequency of ICOS^{high} Tfh cells, plasma levels of IL-21 and optical density (OD) values of MeV-specific IgM antibodies in the patients with acute MeV infection. However, elevated plasma MeV-specific NAb titres were not associated with the frequency of Tfh, ICOS^{high} Tfh, or PD-1^{high} Tfh cells in the patients with acute MeV infection.

Conclusion: These results suggest that an elevated Tfh cell frequency and associated molecules possibly play a key role in children with acute MeV infection, which contributes to the prevention and treatment of MeV infection in children.

Keywords: Measles virus, Follicular helper T cells, Bcl-6, IL-21, Neutralizing antibody

Background

Measles, which is caused by measles virus (MeV), is a highly contagious disease characterized by fever, maculopapular rash, conjunctivitis, cough and Koplik spots, and other complications include pneumonia, encephalitis, and death [1, 2]. The measles vaccine is a highly safe and effective vaccine for controlling and interrupting MeV infection; however, cases of measles have risen to high levels globally in recent years [3–7]. An estimated 110,000 deaths were reported in 2017, most of which were children under 5 years of age [8, 9]. Measle cases rose by 300% in the first three months of 2019 in

comparison with the same period in 2018 [10]. The elimination and eradication of measles remains a serious and emergent problem worldwide.

Evidence suggests that MeV-specific IgM/IgG antibody titres in serum are unexpectedly low among cohorts who had high coverage of two-dose vaccination, and low levels of MeV-specific antibodies are closely associated with outbreaks of measles infection; conversely, high levels of MeV-specific antibodies are required to achieve elimination and eradication of MeV infection [4, 11–13]. MeV-specific antibodies are produced by mature B cells that are helped by Th2 cells characterized by the cytokines interleukin (IL)-4, IL-10 and IL-13 [2, 14]. Recent studies indicate that follicular helper T (Tfh) cells play a crucial role in promoting responses in the germinal centre (GC) by B cells that can secrete specific

* Correspondence: cuidawei1978@163.com

³Department of Blood Transfusion, the First Affiliated Hospital, Zhejiang University School of Medicine, Hangzhou 310003, Zhejiang, China
Full list of author information is available at the end of the article



© The Author(s). 2020 **Open Access** This article is licensed under a Creative Commons Attribution 4.0 International License, which permits use, sharing, adaptation, distribution and reproduction in any medium or format, as long as you give appropriate credit to the original author(s) and the source, provide a link to the Creative Commons licence, and indicate if changes were made. The images or other third party material in this article are included in the article's Creative Commons licence, unless indicated otherwise in a credit line to the material. If material is not included in the article's Creative Commons licence and your intended use is not permitted by statutory regulation or exceeds the permitted use, you will need to obtain permission directly from the copyright holder. To view a copy of this licence, visit <http://creativecommons.org/licenses/by/4.0/>. The Creative Commons Public Domain Dedication waiver (<http://creativecommons.org/publicdomain/zero/1.0/>) applies to the data made available in this article, unless otherwise stated in a credit line to the data.

antibodies, and Tfh cells are characterized by expression of chemokine (CXC motif) receptor 5 (CXCR5), programmed death-1 (PD-1), and inducible costimulator (ICOS); high secretion of IL-21; and activity of B-cell lymphoma-6 (Bcl-6) as a critical transcription factor [15–18]. Peripheral ICOS^{high}CXCR5⁺CD4⁺ Tfh (ICOS^{high} Tfh) and/or PD-1^{high} Tfh cells have been defined as circulating Tfh cells in the peripheral blood, and circulating Tfh cells are closely related to autoantibody levels in autoimmune diseases [19]. To date, there have been few studies on Tfh cells in the peripheral blood of children with acute MeV infection.

The present research explores the role of Tfh cells, associated molecules and plasma MeV-specific antibodies in peripheral blood from children with acute MeV infection. These results indicate that an elevated frequency of Tfh cells plays a crucial role in children with MeV infection, which provides new insights into the prevention and treatment of MeV infection.

Results

Demographics of the MeV patients

Among 42 patients, 9 (21.4%) were negative, 33 (78.6%) were positive for MeV-specific IgM antibodies, and 26 (61.9%) were positive for MeV-specific IgG antibodies. Moreover, the results showed that 8 cases were associated with the Chinese vaccine strain Shanghai-191 (GenBank accession No. FJ416067) and 34 cases were positive for wild-type MeV infection. However, 18 (90%) children were positive for MeV-specific IgG antibodies in the HC group, and the results indicated that the HCs were negative for MeV-specific IgM antibodies and MeV RNA.

The mean age of the patients, including 19 females and 23 males, was 3.6 years, and the mean age of the HCs, including 9 females and 11 males, was 3.5 years. Thirty-nine patients and 20 HC children had two doses of the measles vaccine, and only 3 patients were unvaccinated. The patients with MeV infection had fever (100%), maculopapular rash (100%), cough (83.3%) and conjunctivitis (54.8%). The results are shown in Table 1.

Elevated frequencies of Tfh cells in patients with acute MeV infection

To explore the potential role of Tfh cells in the peripheral blood of the patients with acute-phase MeV infection, the frequencies of CD4⁺CXCR5⁺ Tfh, ICOS^{high} Tfh and PD-1^{high} Tfh cells in PBMCs were detected by flow cytometry (Fig. 1a). The results indicated that the frequency of CD4⁺CXCR5⁺ Tfh cells was surprisingly increased in the patients with acute MeV infection in comparison with the HCs (Fig. 1b). In addition, the frequencies of ICOS^{high} Tfh cells and PD-1^{high} Tfh cells

Table 1 Clinical characteristics of children with acute MeV infection

Clinical characteristics	MeV	HC
Number	42	20
Age (years)	3.6 ± 1.2	3.5 ± 1.1
Sex (M/F)	23/19	11/9
Maculopapular rash	42 (100%)	N
Fever	42 (100%)	N
Cough	35 (83.3%)	N
Conjunctivitis	23 (54.8%)	N
Koplik spots	19 (45.2%)	N
Chronic bronchitis	10 (23.8%)	N
Viral RNA of MeV	Positive	Negative
IgM (negative/positive)	9/33	0/0
IgG (negative/positive)	16/26	2/18
Time of the last booster vaccination	18 ~ 24 Mon ^a	18 ~ 24 Mon

Note: M/F Male/female, HC Healthy controls, MeV Measles virus, N Normal, Mon Month. ^a, 3 of 42 cases were unvaccinated in the study. In China, two doses of routine vaccination of measles were performed, the age of children was 8 months for the first dose, and the last booster vaccination was 18 ~ 24 months

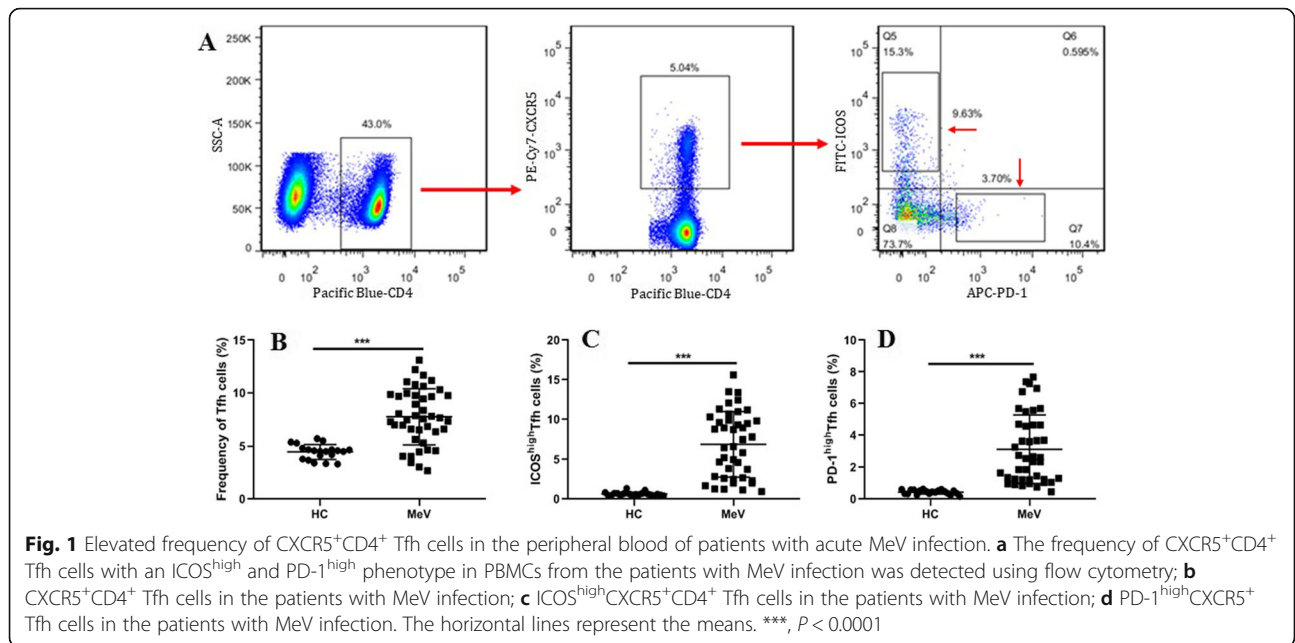
were obviously increased in the patients with MeV infection in comparison with the HCs (Fig. 1c, d).

Correlation of plasma MeV-specific antibody levels and Tfh cell frequencies

The frequencies of CXCR5⁺CD4⁺ Tfh and ICOS^{high} Tfh cells but not that of PD-1^{high} Tfh cells were positively correlated with the optical density (OD) values of plasma MeV-specific IgM antibodies from the patients during the acute phase of MeV infection (Fig. 2a, c). Interestingly, the frequencies of Tfh cells, ICOS^{high} Tfh cells and PD-1^{high} Tfh cells were significantly increased in the patients positive for MeV-specific IgM antibodies compared to those lacking specific IgM antibodies (Fig. 2d-f). However, the frequencies of Tfh, ICOS^{high} Tfh and PD-1^{high} Tfh cells were not correlated with the OD values of plasma MeV-specific IgG antibody levels (Fig. S1). Additionally, measles neutralizing antibody (NAb) titres were obviously lower in the vaccine strain (Shanghai-191) group than in the wild-type measles group, and the MeV-NAb titres were not also correlated with the frequency of Tfh, ICOS^{high} Tfh, or PD-1^{high} Tfh cells (Fig. S2).

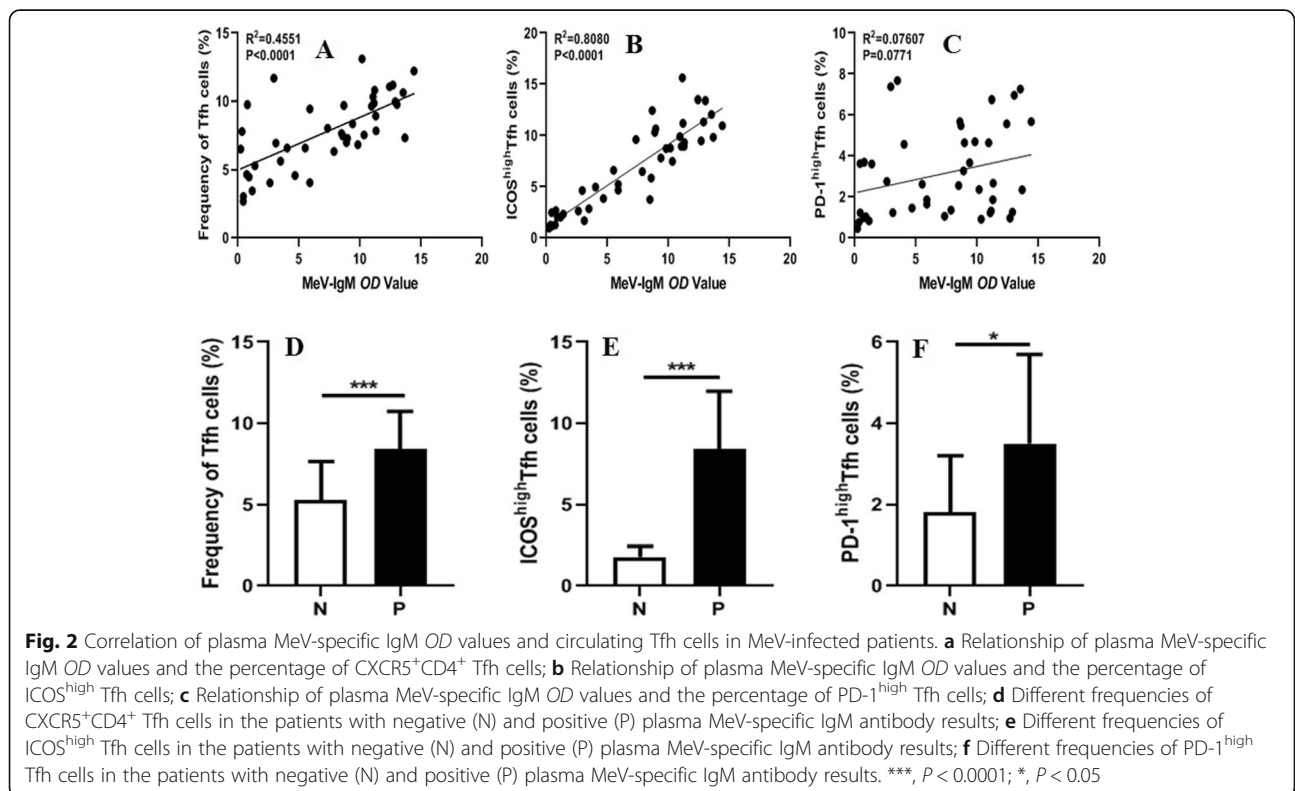
Elevated plasma IL-21 levels in patients with acute MeV infection

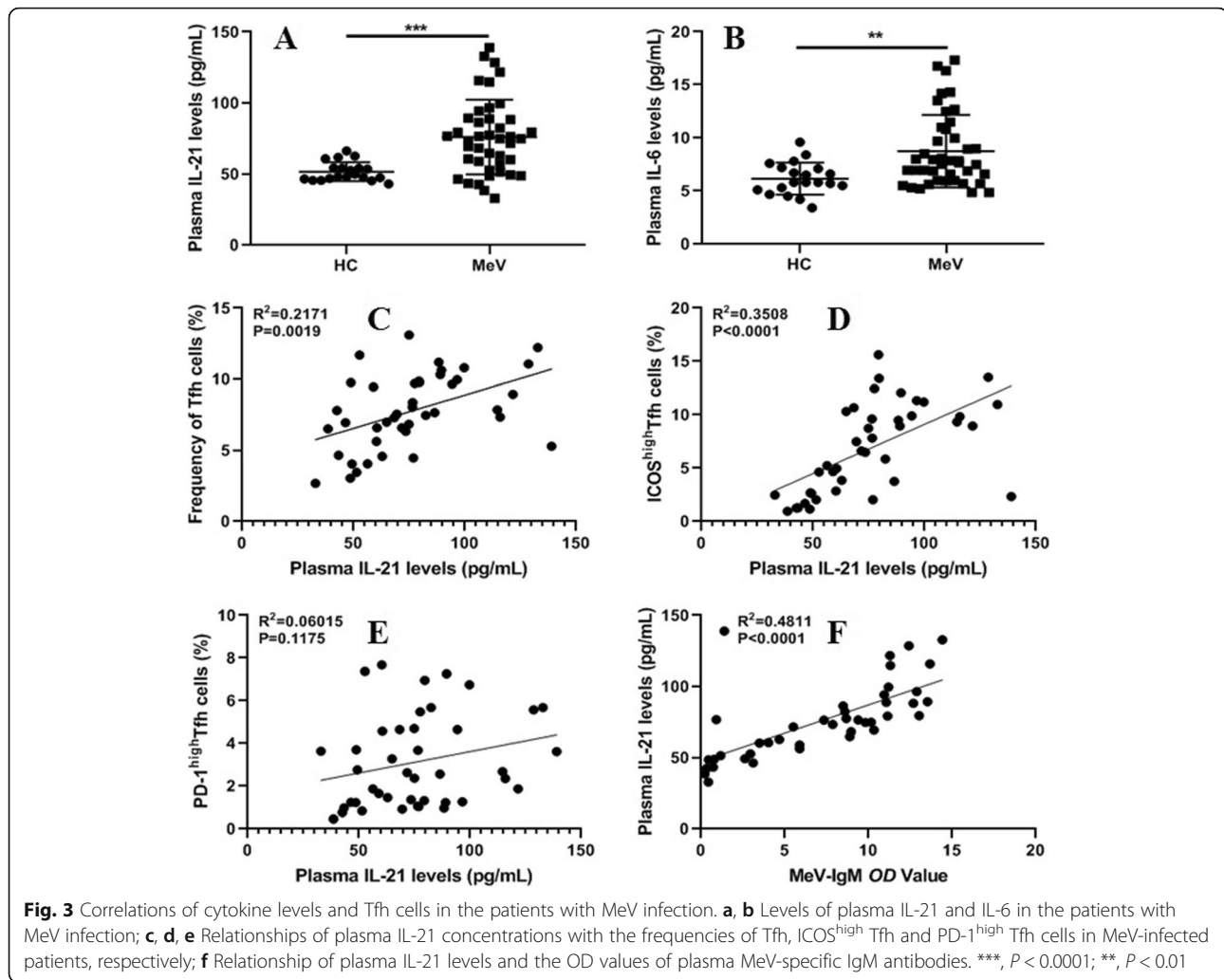
To investigate the role of Tfh cell-associated cytokines in the plasma, the concentrations of IL-21 and IL-6 in the plasma of the patients with acute-phase MeV infection and that of the children in the HC group were tested by ELISA. The concentrations of IL-21 and IL-6 in the plasma were remarkably



elevated in the patients with acute MeV infection compared to the HCs (Fig. 3a, b). Moreover, plasma IL-21 concentrations were positively related to the frequencies of Tfh cells, ICOS^{high} Tfh cells and the OD values of plasma MeV-specific IgM antibodies in the patients with acute-phase MeV infection (Fig. 3c, d, f); however, plasma IL-21 concentrations were not

associated with the OD values of plasma MeV-specific IgG antibodies (data not shown). However, there was no correlation between the PD-1^{high} Tfh cell frequency and plasma IL-21 concentration in these patients (Fig. 3e). Additionally, plasma IL-6 levels were not significantly related to the frequency of Tfh cells, ICOS^{high} Tfh cells, or PD-1^{high} Tfh cells or to the OD





values of plasma MeV-specific IgM antibodies in the patients with acute-phase MeV infection (data not shown).

mRNA expression of IL-21, IL-6 and Bcl-6 in patients with acute MeV infection

To further investigate the roles of genes encoding Tfh cell-associated molecules, the mRNA expression levels of IL-21, IL-6 and Bcl-6 in PBMCs isolated from the patients during the acute phase of MeV infection and HCs were assessed. The results suggested that the relative mRNA expression levels of IL-21 and IL-6 were remarkably increased in the PBMCs from the patients with acute MeV infection in comparison with those from the HCs, but Bcl-6 mRNA expression was not significantly different between the patients and HCs (Fig. 4a-c).

Discussion

Measles vaccination is an effective measure to prevent and control MeV infection, although the variation in

MeV and low levels of MeV-specific antibodies are important factors for the epidemic of MeV infection [2, 12–14, 20]. In this study, there were 33 (78.6%) positive patients with MeV-specific IgM antibodies, and 26 (61.9%) patients were detected to have MeV-specific IgG antibodies among 42 patients with MeV infection. Additionally, PCR results showed that all patients were positive for MeV infection, including 8 with vaccine-associated measles and 34 with wild-type measles. Interestingly, 18 (90%) children were positive for MeV-specific IgG antibodies. These results indicated that a low positive rate for MeV-specific IgG antibodies and wild-type MeV were mainly responsible for MeV infection. Therefore, a high level of MeV-specific neutralizing antibodies, surveillance of variation in MeV and design of novel MeV vaccines are required for elimination of MeV infection.

Early studies showed that Tfh cells and associated molecules facilitate the production of virus-specific antibodies to neutralize the virus by generating long-lived

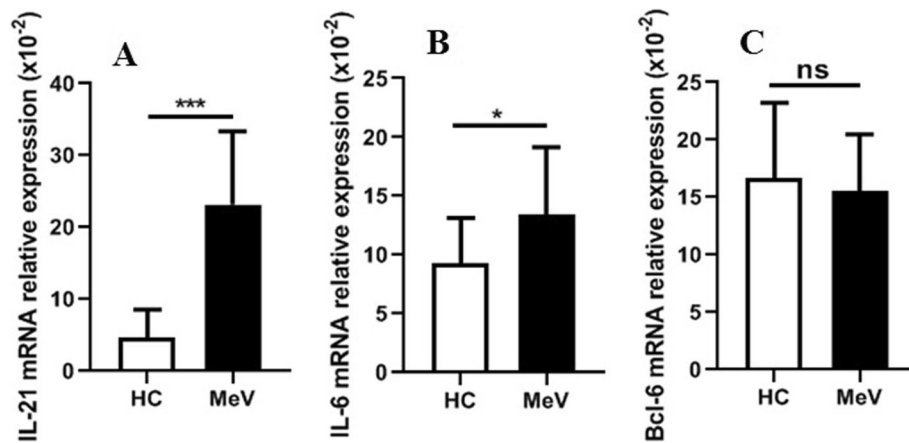


Fig. 4 The relative mRNA expression levels of IL-21, IL-6 and Bcl-6 in PBMCs from MeV patients ($n = 20$) and HCs ($n = 12$). **a** Relative mRNA expression level of IL-21; **b** Relative mRNA expression level of IL-6; **c** Relative mRNA expression level of Bcl-6. ***, $P < 0.0001$; **, $P < 0.01$; ns, no significance

memory B cells and plasma cells [16, 21, 22]. Naive CD4⁺T cells are clearly polarized to Tfh cell fates with high Bcl-6 and CXCR5 expression after lymphocytic choriomeningitis virus (LCMV) infection or influenza virus infection, which is important for viral clearance; however, Tfh cells are virus reservoirs in patients infected with human immunodeficiency virus (HIV) or individuals infected with simian immunodeficiency virus (SIV) [16, 21–24]. During LCMV, HIV, or influenza virus infection, ICOS and PD-1 expression on Tfh cells is crucial for GC formation and humoral response induction [21–23, 25]. However, limited information is available about Tfh cells in MeV infection. In this study, the frequencies of CD4⁺CXCR5⁺ Tfh, ICOS^{high} Tfh and PD-1^{high} Tfh cells in peripheral blood were significantly increased in children with acute-phase MeV infection. In addition, the Tfh cell and ICOS^{high} Tfh cell frequencies were positively correlated with the OD values of plasma MeV-specific IgM antibodies. However, the frequencies of Tfh, ICOS^{high} Tfh and PD-1^{high} Tfh cells were not related to the OD values of plasma MeV-specific IgG antibody or measles neutralizing antibody (MeV-NAb) titres. These findings suggested that elevated percentages of Tfh cells, ICOS^{high} Tfh cells and PD-1^{high} Tfh cells might contribute to the induction of MeV-specific IgM antibody production during the acute phase of MeV infection. During the early phase of MeV infection, the MeV-specific IgG antibody and MeV-NAb titres were not rapidly induced by Tfh cells and their subsets. We will try to obtain follow-up serum samples to determine whether the presence of these circulating Tfh cells during the acute response correlates with better long-term antibody responses, including elevated MeV-specific IgG antibody and MeV-NAb levels, in the future, which is helpful for our research on the role of Tfh cells in MeV infection.

Recent research shows that IL-6 and IL-21 play a central role in regulating Tfh cell differentiation and function, including ICOS and PD-1 expression in Tfh cells [16, 26]. IL-6 is expressed by multiple cell types, including APCs and B cells, and IL-21 is predominantly produced by Tfh cells [16, 27]. IL-6 and IL-21 can drive Tfh cell differentiation by inducing expression of the transcription factor Bcl-6, and loss of IL-6 and IL-21 signalling significantly reduces the number of Tfh cells and attenuates viral clearance during chronic viral infections [27, 28]. Moreover, IL-21 is important for B cell differentiation and the antibody response, and loss of IL-21 signalling produces an obvious defect in the differentiation of long-lived plasma cells and in the maintenance of specific antibody levels during virus infection [23, 29, 30]. In this study, the expression of IL-6 in the plasma and PBMCs was significantly elevated in the patients with acute MeV infection, which was consistent with previous studies [31, 32]. Limited information is available about IL-21 levels in MeV infection. IL-21 levels were also increased in the plasma and PBMCs of the patients with acute MeV infection, and plasma IL-21 levels were closely correlated with the Tfh cell and ICOS^{high} Tfh cell frequencies and OD values of MeV-specific IgM antibodies but not with the OD values of MeV-specific IgG antibodies. These findings indicate that MeV infection can induce the expression of IL-6 and IL-21 molecules that contribute to an increase in the number of Tfh cells and humoral immunity during the acute phase of MeV infection. Bcl-6, which is expressed in multiple cell types, including Tfh cells and B cells, is one of the major transcription factors for Tfh cell differentiation and is regulated by various molecules, including CD40-CD40 ligand and ICOS-ICOS ligand [15–18, 33]. However, Bcl-6 mRNA expression was not significantly different

between the patients with MeV infection and HCs. We concluded that in this study, we detected Bcl-6 mRNA expression in PBMCs but not in purified Tfh cells, which might indicate a generally negative effect on Bcl-6 mRNA expression.

Our study also had limitations. First, it included a relatively limited number of clinical cases and undetected titres of MeV-specific IgG antibodies and MeV-specific neutralizing antibodies; thus, it is impossible to extrapolate our results to the entire panel of MeV infections. Second, we studied the frequency of Tfh cells and some associated molecules in PBMCs rather than exploring the mechanism underlying Tfh cell differentiation and function.

Conclusion

The present study showed that the frequencies of CXCR5⁺CD4⁺ Tfh cells, PD-1^{high} Tfh cells and ICOS^{high} Tfh cells; levels of Tfh cell-associated molecules, including IL-21, IL-6 and Bcl-6; and plasma levels of MeV-specific IgM antibodies were significantly changed in peripheral blood from children collected during the acute phase of MeV infection, which suggested that abnormally expanded CXCR5⁺CD4⁺ Tfh cells, ICOS^{high} Tfh cells and PD-1^{high} Tfh cells with increased IL-21 and IL-6 levels might promote the production of MeV-specific IgM antibodies in children with acute MeV infection. Therefore, these results implied that aberrantly increased Tfh cell levels and associated molecules might play a crucial role in children with acute MeV infection, which would have therapeutic implications for MeV infection.

Methods

Demographics of children

The acute cases of MeV infection were confirmed by characteristic clinical symptoms (such as maculopapular rash, high fever and/or cough, and conjunctivitis) and laboratory diagnosis, including at least one positive result for MeV-specific IgM antibodies and MeV RNA [20, 34]. MeV-specific IgM antibodies in plasma collected from the patients within 4 days of rash onset were detected with a commercially available enzyme-linked immune sorbent assay (ELISA) (Haitai Biotechnology, Zhuhai, China). MeV RNA was also tested with a quantitative real-time RT-PCR assay using throat, nasopharyngeal, urine and/or fluids of maculopapular rash samples [20]. Samples positive for MeV RNA were further amplified with an RT-PCR assay specific for the C terminus of the N gene of MeV [34]. The RT-PCR products purified with the Qiagen MinElute PCR Purification Kit (Qiagen, Hilden, Germany) were sequenced, and the sequences were analysed to identify the genotypes of MeV to discriminate the measles vaccine strain and wild-

type virus by MEGA version 5.0 software (<http://www.megasoftware.net>). Forty-two children with acute MeV infection in the Department of Paediatrics and 20 healthy controls (HCs) matched by age and sex were recruited at the First People's Hospital of Huzhou, Zhejiang Province, China.

Measure of the measles neutralizing antibody (NAb) titre

Plasma was inactivated at 56 °C for 30 min and diluted from 1:2 to 1:1024. In a 96-well cell plate, 25 µL of diluted serum was mixed with 25 µL of MeV solution (100 TCID₅₀) and neutralized for 1 h at 37 °C. Then, 100 µL of Vero/SLAM cells (2 × 10⁶ cells) were added to the plate with the serum-MeV mixture and cultured at 37 °C for 7 days. The cytopathic effect (CPE) was observed and recorded in the study. The NAb titre of the serum without any cytopathic effects was determined by calculating the reciprocal of the highest dilution of the serum without any CPEs [35].

Isolation of peripheral blood mononuclear cells

Fresh peripheral blood specimens were collected from the HCs and patients with acute MeV infection. Isolation of peripheral blood mononuclear cells (PBMCs) was performed utilizing a Ficoll-Hypaque solution (CL5020, Netherlands) following the manufacturer's protocol. Next, the PBMCs were carefully washed twice with phosphate-buffered saline (PBS) and transferred into sterile tubes.

Flow cytometry

Single-cell suspensions were obtained, and surface markers were stained according to the manufacturers' protocols for relevant fluorochrome-conjugated anti-human antibodies: anti-CD4-Pacific Blue, anti-CXCR5 (CD185)-PE-Cy7, anti-ICOS (CD278)-FITC, anti-PD-1 (CD279)-APC, and matched isotype controls (BioLegend, San Diego, CA). The samples were analysed on a BD FACSVerser™ flow cytometer (BD Biosciences, Sparks, USA), and FlowJo software (version 7.6.5) was used to analyse the flow cytometry data.

Elisa

Plasma IL-21 and IL-6 cytokine concentrations were assessed by ELISA (BioLegend, San Diego, CA) according to the manufacturer's protocols. MeV-specific IgM and MeV-specific IgG antibodies in plasma samples collected within 4 days of rash onset were detected with a commercially available ELISA (Haitai Biotechnology, Zhuhai, China) according to the manufacturer's protocol [20].

Quantitative real-time PCR

Total RNA was extracted from the PBMCs of each patient and HC, and a reverse transcription reagent kit (Takara, Dalian, China) was used to synthesize cDNA. Quantitative real-time polymerase chain reaction (PCR) was performed to test the expression levels of target genes in triplicate with Takara SYBR Supermix (Takara, Dalian, China) as previously described [36]. The sequences of the primers used were as follows: IL-21: forward, 5'-CACAGACTAA CATGCCCTTCAT-3', and reverse, 5'-GAATCTTCAC TTCCGTGTGTTCT-3';

IL-6: forward, 5'-AGACAGCCACTCACCTCTTCAG-3', and reverse, 5'-TTCTGCCAGTGCTCTTTGCTG-3';

Bcl-6: forward, 5'-CATGCAGAGATGTGCCTCCACA-3', and reverse, 5'-TCAGAGAAGCGGCAGTCACACT-3'; and glyceraldehyde 3-phosphate dehydrogenase (GAPDH): forward, 5'-GTCTCCTCTGACTTCAAC AGCG-3'; and reverse, 5'-ACCACCCTGTTGCTGTAG CCAA-3'. GAPDH was used as an internal control.

Statistical analysis

Statistical significance was determined by the Mann-Whitney *U*-test or one-way ANOVA. Spearman correlation coefficients were used to analyse correlations between variables. All analyses were performed with GraphPad Prism 8 software (GraphPad Software, Inc., CA). All *p* values < 0.05 were considered statistically significant.

Supplementary information

Supplementary information accompanies this paper at <https://doi.org/10.1186/s12865-020-00379-4>.

Additional file 1: Figure S1. Correlation of plasma MeV-specific IgG OD values and Tfh cells in MeV-infected patients. **a** Relationship of plasma MeV-specific IgG OD values and the percentage of Tfh cells; **b** Relationship of plasma MeV-specific IgG OD values and the percentage of ICOS^{high} Tfh cells; **c** Relationship of plasma MeV-specific IgG OD values and the percentage of PD-1^{high} Tfh cells. **Figure S2.** Correlation of plasma MeV-specific NAb titres and Tfh cells in MeV-infected patients. **a** MeV-specific NAb titres in Shanghai-191 vaccine strain- and wild-type strain-infected patients; **b, c, d** Relationships of plasma NAb titres with the percentages of Tfh, ICOS^{high} Tfh and PD-1^{high} Tfh cells; **e, f, g** Relationships of plasma NAb titres with the percentages of Tfh, ICOS^{high} Tfh and PD-1^{high} Tfh cells.

Abbreviations

PBMCs: Peripheral blood mononuclear cells; MeV: Measles virus; Tfh: Follicular helper T cells; IL-6: Interleukin-6; IL-21: Interleukin-21; Bcl-6: B-cell lymphoma-6; GC: Germinal centre; CXCR5: Chemokine (CXC motif) receptor 5; PD-1: Programmed death-1; ICOS: Inducible costimulator; ELISA: Enzyme-linked immunosorbent assay; HC: Healthy control; PCR: Polymerase chain reaction; GAPDH: Glyceraldehyde 3-phosphate dehydrogenase; LCMV: Lymphocytic choriomeningitis virus; HIV: Human immunodeficiency virus; SIV: Simian immunodeficiency virus

Acknowledgements

We wish to thank all the study nurses who carried out the interviews and laboratory members for helpful discussions. We gratefully acknowledge the highly qualified native English speaking editors American Journal Experts

(AJE) for providing reputable English language editing service (Verification code: 14F2-6685-7441-1AA0-DF16) for our manuscript.

Authors' contributions

XW and DC participated in the design of the study. HY and LZ were responsible for the clinical diagnosis of the patients with acute MeV infection. WS, XZ, LH, and JS performed the collection of specimens and experimental work. XW, DC, and WS performed the statistical analyses and drafted the manuscript. All authors read and approved the final manuscript.

Funding

This study was supported by the Natural Science Foundation of Zhejiang Province, China (LY16H200001) and the Scientific Research Projects of Education of Zhejiang Province, China (Y201534117). The funding bodies played no role in the design of the study, the collection, analysis, and interpretation of data, or in writing the manuscript.

Availability of data and materials

The datasets used and/or analysed during the current study are available from the corresponding author on reasonable request.

Ethics approval and consent to participate

The study was approved by the Medical Ethics Committee of the First People's Hospital of Huzhou and conducted according to the Declaration of Helsinki. Written consent to participate as a patient or HCs was obtained from the parents/guardians of the minors included in this study (minors are considered anyone under the age of 16).

Consent for publication

Not applicable.

Competing interests

The authors declare that they have no conflicts of interest.

Author details

¹Key Laboratory for Translational Medicine, First Affiliated Hospital, Huzhou Teachers College, the First People's Hospital of Huzhou, Huzhou 313000, China. ²Department of Paediatrics, First Affiliated Hospital, Huzhou Teachers College, the First People's Hospital of Huzhou, Huzhou 313000, China. ³Department of Blood Transfusion, the First Affiliated Hospital, Zhejiang University School of Medicine, Hangzhou 310003, Zhejiang, China.

Received: 6 April 2020 Accepted: 24 August 2020

Published online: 01 September 2020

References

- Markowitz LE, Preblud SR, Orenstein WA, Rovira EZ, Adams NC, Hawkins CE, et al. Patterns of transmission in measles outbreaks in the United States, 1985-1986. *N Engl J Med*. 1989;320:75-81.
- Moss WJ. Measles. *Lancet*. 2017;390:2490-502.
- Graham M, Winter AK, Ferrari M, Grenfell F, Moss WJ, Azman AS, et al. Measles and the canonical path to elimination. *Science*. 2019; 364:584-7.
- Patel MK, Orenstein WA. Classification of global measles cases in 2013-17 as due to policy or vaccination failure: a retrospective review of global surveillance data. *Lancet Glob Health*. 2019;7:313-20.
- Paules CI, Marston HD, Fauci AS. Measles in 2019 - going backward. *N Engl J Med*. 2019;380:2185-7.
- Mere MO, Goodson JL, Chandio AK, Rana MS, Hasan O, Teleb N, et al. Progress toward measles elimination - Pakistan, 2000-2018. *MMWR Morb Mortal Wkly Rep*. 2019;68:505-10.
- Zimmerman LA, Muscat M, Singh S, Mamou MB, Jankovic D, Datta S, et al. Progress toward measles elimination - European region, 2009-2018. *MMWR Morb Mortal Wkly Rep*. 2019;68:396-401.
- Cousins S. Measles: a global resurgence. *Lancet Infect Dis*. 2019;19:362-3.
- WHO. Measles fact sheet 2018. 2018 Available from: <http://www.who.int/en/news-room/fact-sheets/detail/measles>.
- Mahase E. Measles cases rise 300% globally in first few months of 2019. *BMJ*. 2019;365:1810.
- Brinkman ID, de Wit J, Smits GP, Hulscher HIT, Jongerius MC, Abreu TC, et al. Early measles vaccination during an outbreak in the Netherlands: reduced

- short and long-term antibody responses in children vaccinated before 12 months of age. *J Infect Dis.* 2019;220:594–620.
12. Gidding HF, Quinn HE, Hueston L, Dwyer DE, McIntyre PB. Declining measles antibodies in the era of elimination: Australia's experience. *Vaccine.* 2018;36:507–13.
 13. Sundell N, Dotevall L, Sansone M, Andersson M, Lindh M, Wahlberg T, et al. Measles outbreak in Gothenburg urban area, Sweden, 2017 to 2018: low viral load in breakthrough infections. *Euro Surveill.* 2019;24:1900114.
 14. Diane G. The Immune Response in Measles: Virus Control, Clearance and Protective Immunity. *Viruses.* 2016;8:282.
 15. Fazilleau N, Mark L, McHeyzer-Williams LJ, McHeyzer-Williams MG. Follicular helper T cells: lineage and location. *Immunity.* 2009;30:324–35.
 16. Vinuesa CG, Linterman MA, Yu D, MacLennan ICM. Follicular helper T cells. *Annu Rev Immunol.* 2016;34:335–68.
 17. Deng J, Wei Y, Fonseca V, Graça L, Yu D. T follicular helper cells and T follicular regulatory cells in rheumatic diseases. *Nat Rev Rheumatol.* 2019;15:475–90.
 18. Crotty S. T follicular helper cell biology: a decade of discovery and diseases. *Immunity.* 2019;50:1132–48.
 19. Xie J, Cui D, Liu Y, Jin J, Tong H, Wang L, et al. Changes in follicular helper T cells in idiopathic thrombocytopenic Purpura patients. *Int J Biol Sci.* 2015;11:220–9.
 20. Cui A, Mao N, Wang H, Xu S, Zhu Z, Ji Y, et al. Importance of real-time RT-PCR to supplement the laboratory diagnosis in the measles elimination program in China. *PLoS One.* 2018;13:e0208161.
 21. Greczmiel U, Kräutler NJ, Pedrioli A, Bartsch I, Oxenius A. Sustained T follicular helper cell response is essential for control of chronic viral infection. *Sci Immunol.* 2017;2:8686.
 22. Huang Q, Hu J, Tang J, Xu L, Ye L. Molecular basis of the differentiation and function of virus specific follicular helper CD4+ T cells. *Front Immunol.* 2019;10:249.
 23. Koutsakos M, Nguyen THO, Kedzierska K. With a little help from T follicular helper friends: Humoral immunity to influenza vaccination. *J Immunol.* 2019;202:360–7.
 24. Xu L, Cao Y, Xie Z, Huang Q, Bai Q, Yang X, et al. The transcription factor TCF-1 initiates the differentiation of TFH cells during acute viral infection. *Nat Immunol.* 2015;16:991–9.
 25. Cook KD, Shpargel KB, Starmer J, Whitfield-Larry F, Conley B, Allard DE, et al. T follicular helper cell-dependent clearance of a persistent virus infection requires T cell expression of the histone Demethylase UTX. *Immunity.* 2015;43:703–14.
 26. Jogdand GM, Suchitra M, Satish D. Regulators of Tfh cell differentiation. *Front Immunol.* 2016;7:520.
 27. Karnowski A, Chevrier S, Belz GT, Mount A, Emslie D, D'Costa K, et al. B and T cells collaborate in antiviral responses via IL-6, IL-21, and transcriptional activator and coactivator, Oct2 and OBF-1. *J Exp Med.* 2012;209:2049–64.
 28. Harker JA, Lewis GM, Mack L, Zuniga EI. Late Interleukin-6 escalates T follicular helper cell responses and controls a chronic viral infection. *Science.* 2011;334:825–9.
 29. Rasheed MAU, Latner DR, Aubert RD, Gourley T, Spolski R, Davis CW, et al. Interleukin-21 is a critical cytokine for the generation of virus-specific long-lived plasma cells. *J Virol.* 2013;87:7737–46.
 30. He L, Gu W, Wand M, Chang X, Sun X, Zhang Y, et al. Extracellular matrix protein 1 promotes follicular helper T cell differentiation and antibody production. *Proc Natl Acad Sci U S A.* 2018;115:8621–6.
 31. Ichiyama T, Siba P, Suarkia D, Reeder J, Takasu T, Miki K, et al. Analysis of serum and cerebrospinal fluid cytokine levels in subacute sclerosing panencephalitis in Papua New Guinea. *Cytokine.* 2006;33:17–20.
 32. Ten Oever J, Riza A, Sabou M, Cismaru C, Netea MG, Slavcovic A. Characterization of the acute inflammatory response in measles infection. *J Pediatric Infect Dis Soc.* 2013;3:197–200.
 33. Lee SK, Rigby RJ, Zotos D, Tsai LM, Kawamoto S, Marshall JL, et al. B cell priming for extrafollicular antibody responses requires Bcl-6 expression by T cells. *J Exp Med.* 2011;208:1377–88.
 34. Cheng WY, Lee L, Rota PA, Yang DC. Molecular evolution of measles viruses circulated in Taiwan 1992–2008. *Virol J.* 2009;6:219.
 35. Hong J, Kim D, Won Y, Yoon J, Park KJ, Oh J, Kim C. Correlation between the results of two analytical methods for measuring measles virus neutralizing antibodies in source plasma and therapeutic immunoglobulin products. *Biologicals.* 2019;59:20–8.
 36. Xie J, Yan L, Lei W, Ruan G, Yuan H, Fang H, et al. Expansion of circulating T follicular helper cells in children with acute Henoch-Schönlein Purpura. *J Immunol Res.* 2015;2015:1–9.

Publisher's Note

Springer Nature remains neutral with regard to jurisdictional claims in published maps and institutional affiliations.

Ready to submit your research? Choose BMC and benefit from:

- fast, convenient online submission
- thorough peer review by experienced researchers in your field
- rapid publication on acceptance
- support for research data, including large and complex data types
- gold Open Access which fosters wider collaboration and increased citations
- maximum visibility for your research: over 100M website views per year

At BMC, research is always in progress.

Learn more [biomedcentral.com/submissions](https://www.biomedcentral.com/submissions)

